

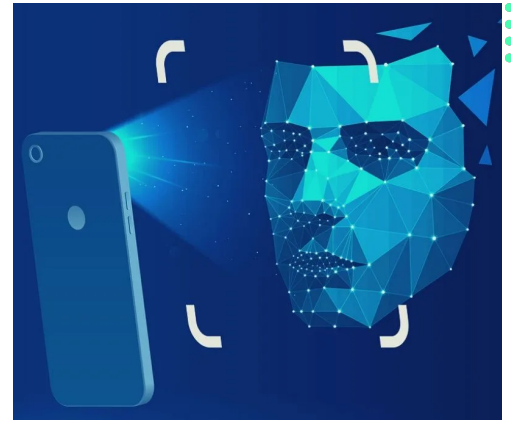


# Neuras.AI: Redefining Recognition & Analytics Through AI

## Face Recognition

### Unmatched Face Recognition

Our robust face recognition API offers seamless clocking and identification capabilities, providing a valuable layer of security to your existing systems.



<https://www.neuras.ai>

Phone: (+212) 539 32 41 71 | Mail: [info@neuras.ai](mailto:info@neuras.ai)

Adresse: Rue Jamal Eddine al Afghani  
Soukna Mouriha, Tanger 90000 Maroc

## Flexible Face Recognition API

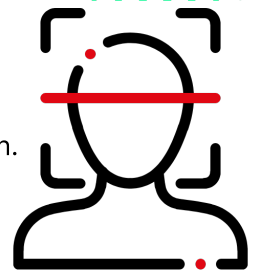
Discover the power of Neuras.ai's comprehensive API for face recognition, designed to provide you with unparalleled flexibility and efficiency. Seamlessly integrate our API into your systems with the user-friendly Swagger interface. Experience lightning-fast inference times, enabling real-time identification and verification of individuals. Our advanced face recognition technology also incorporates robust spoof detection, ensuring heightened security and protection against fraudulent attempts. Embrace the cutting-edge capabilities of our API, tailored to cater to your unique needs and drive transformative results for your face recognition projects, all while ensuring optimal security with our state-of-the-art spoof detection features.

## API Deployment and Inference

- **Dockerized App:** Easily deploy the API as a Docker container for portability and smooth integration.
- **On-Edge Deployment:** Use STM Margest Automate for real-time processing on local devices or edge platforms.
- **Cloud Deployment:** Leverage popular cloud platforms for scalable and reliable face recognition services.
- **On-Premises Deployment:** Deploy the API on your infrastructure for enhanced data control and security.
- **Web and Mobile Applications:** Seamlessly integrate the API into applications for user-friendly experiences.
- **High Availability:** Ensure continuous access to critical face recognition services.
- **Scalability:** Easily scale the deployment to handle varying workloads and future growth.
- **Spoof Detection Integration:** Enhance security with built-in spoof detection, ensuring reliable results.

## Use Cases

- Access Control: Secure entry with facial recognition for buildings and offices.
- Attendance Tracking: Manage employee attendance in real-time with facial recognition.
- Security and Surveillance: Identify individuals and threats for enhanced security.
- Visitor Management: Streamline visitor registration with facial recognition.
- Retail Analytics: Analyze customer demographics and behavior for optimized retail strategies.
- Smart City Solutions: Deploy face recognition for traffic management and public safety.
- Law Enforcement: Assist in suspect identification and criminal investigations.
- Hospitality and Events: Speed up check-ins and access control for guests.
- Healthcare: Ensure patient identification and secure access in healthcare facilities.
- Education: Improve campus security with facial recognition for school entry and attendance tracking.





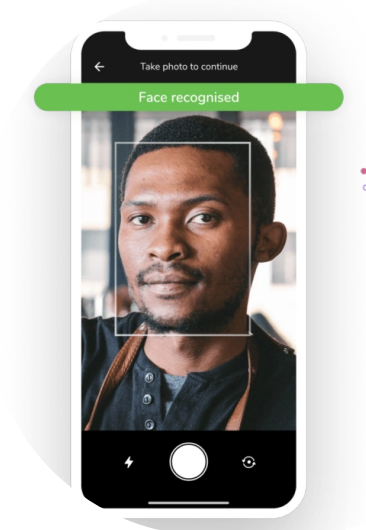
# MobiClock

Introducing MobiClock, our cutting-edge clocking system designed to streamline time management processes. With its dynamic web application and user-friendly mobile app, MobiClock caters to various roles, offering effortless personnel management, real-time hardware tracking, and efficient face-based attendance tracking. Enjoy unmatched flexibility as MobiClock supports multiple venues, empowering businesses operating at different sites or fixed locations to achieve seamless time tracking. Embrace MobiClock's adaptability, which extends to advanced features like geofencing. By utilizing geofencing capabilities when setting up venues, businesses can define virtual boundaries, enabling automatic clock-in and clock-out for employees within designated areas. This ensures accurate time recording, enhances security, and optimizes workforce management, making MobiClock a comprehensive solution to elevate your organization's productivity and attendance monitoring.

## Features



- **Dynamic Web Application:** A web-based platform with an interactive and user-friendly interface.
- **Mobile App Accessibility:** Users can access MobiClock's functionality on-the-go through the mobile app.
- **Face-Based Attendance Tracking:** Reliable and secure attendance tracking using facial recognition technology.
- **Real-Time Hardware Status:** Get instant insights into the status of hardware and equipment.
- **Effortless Personnel Management:** Easily manage personnel logs, user roles, and enroll new users.
- **Task Management:** Supervisors can monitor and manage tasks with progress pictures and intervention documents.
- **Geofencing Capabilities:** Define virtual boundaries to enable automatic clock-in and clock-out at designated areas.
- **Multiple Venue Support:** Seamlessly track time and attendance across different sites or fixed locations.
- **Stock Management:** Efficiently enroll new materials and assign tools using QR code scanning.
- **Superadmin Control:** Comprehensive oversight and user management for system administrators.



## Face Recognition Metrics:

- Recognition Accuracy: High accuracy in matching faces based on face embeddings.
- Feature Dimensionality: 128-dimensional face embeddings for optimal face representation.
- Benchmark Accuracy: The model achieves an accuracy of 99.38% on the Labeled Faces in the Wild benchmark.

## Hardware Requirements

- Processor: Quad-core or higher modern CPU (e.g., Intel Core i5 or AMD Ryzen 5).
- RAM: 4GB or more.
- Storage: At least 40GB of available storage space for the face encodings and other data.
- Graphics Processing: Integrated GPU or dedicated GPU (optional, but can significantly improve performance).
- Operating System: Windows, macOS, or Linux.

## Privacy And Security Metrics

- Data Privacy: We prioritize data privacy and adhere to industry standards and regulations. All sensitive user data, including face images and personal information, are treated with utmost confidentiality and stored securely.
- Data Encryption: To safeguard user data from unauthorized access, we implement strong encryption protocols during data transmission and storage.
- Privacy Compliance: Our face recognition system is designed to comply with relevant data protection regulations, ensuring user privacy and consent are respected at all times.

